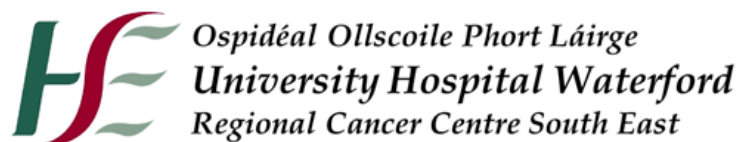


Patient Information for Consent



A06 Pain Relief in Labour

Expires end of March 2021

Further Information

If you have any questions related to the content of this Patient Information Leaflet, please contact the UHW Quality and Patient Safety Office:

Telephone: 051-848527

Email: uhwsafetyandquality@hse.ie

Your query will be forwarded to your doctor/medical team. Urgent concerns about your clinical condition or treatment cannot be responded to through this office.

The Quality and Patient Safety Office is open from Monday to Friday between 09.00 and 17.00hrs. Please leave a message on the voicemail if the phone is unattended.

You may also get more information and references at www.aboutmyhealth.org

Tell us how useful you found this document at www.patientfeedback.org



In partnership with

Royal College
of Surgeons

ADVANCING SURGICAL CARE



UNITED KINGDOM

Information about COVID-19 (Coronavirus)

On 11 March 2020 the World Health Organization confirmed COVID-19 (coronavirus) has now spread all over the world (this means it is a 'pandemic'). Hospitals have very robust infection control procedures, however, it is impossible to make sure you don't catch coronavirus either before you come into the hospital or once you are there. You will need to think carefully about the risks associated with the procedure, the risk of catching coronavirus while you are in hospital, and of not going ahead with the procedure at all. Your healthcare team can help you understand the balance of these risks. If you catch the coronavirus, this could affect your recovery and might increase your risk of pneumonia and even death. Talk to your healthcare team about the balance of risk between waiting until the pandemic is over (this could be many months) and going ahead with your procedure.

Please visit the World Health Organization website: <https://www.who.int/> for up-to-date information.

This document will give you information about the forms of pain relief your midwife or doctor may offer you, specifically TENS (transcutaneous electric nerve stimulation), pethidine or diamorphine, entonox ('gas and air') and epidural anaesthetic.

There are simple ways women use to help them through labour such as relaxation, massage and music. Having a bath, changing position or walking around during labour may make you more comfortable. There are also complementary therapies such as aromatherapy, reflexology, acupuncture and massage.

You may decide to go through labour without any pain relief but most women choose to have some form of pain relief.

TENS

This method uses a small electric current to change the way you feel pain. The current is delivered by a hand-held machine through electrodes attached by sticky pads to your back.

You can change the strength of the current. Some women say that it works well, particularly to ease backache in the early stages of labour.

There is no evidence that TENS has any effects on your baby. The only common problems are temporary patches of redness on your back where the pads are attached and not getting effective pain relief.

Pethidine or diamorphine

Pethidine or diamorphine are morphine-like painkillers given by injection, usually into a muscle. They do not actually ease pain during labour but some women find they are less worried about pain.

Although some women find the painkillers helpful, they do have side effects, including drowsiness, feeling sick and vomiting, and they can delay breastfeeding. They can also make your baby drowsy. Your baby can be treated with medication.

Gas and air

Gas and air is the common name for a mixture of oxygen and nitrous oxide gas (a painkiller and weak anaesthetic). You breathe it through a mask or mouthpiece.

As it acts quickly but not straightaway, it is most effective if breathed in at the start of a contraction. This way, the pain-relieving effect happens by the time the contraction reaches its peak. To reduce the risk of feeling light-headed or sick, gas and air should not be breathed between contractions.

The amount of pain relief given by gas and air varies and it does not remove the pain of labour completely. Some women find it helpful, particularly in the early stages of labour.

Gas and air does not harm your baby. It gives you extra oxygen that may benefit both you and your baby. You can also use it at any time during labour.

Gas and air does have side effects, including light-headedness or dizziness, strange dreams (risk: 1 in 8), feeling sick (risk: 1 in 10) and falling asleep (risk: 1 in 250).

Epidural pain relief

What is an epidural?

Epidural pain relief involves injecting local anaesthetics and other painkillers into the epidural space (an area near your spinal cord). This numbs your nerves to give pain relief in certain areas of your body. An epidural can be used during labour to give relief from labour pains. It can also be used as an anaesthetic for a caesarean section.

An epidural will be given to you by an anaesthetist (doctor trained in anaesthesia). Your anaesthetist is usually assisted by a specially-trained healthcare practitioner.

Although the healthcare team may suggest that you have an epidural, it is your decision to go ahead with an epidural or not.

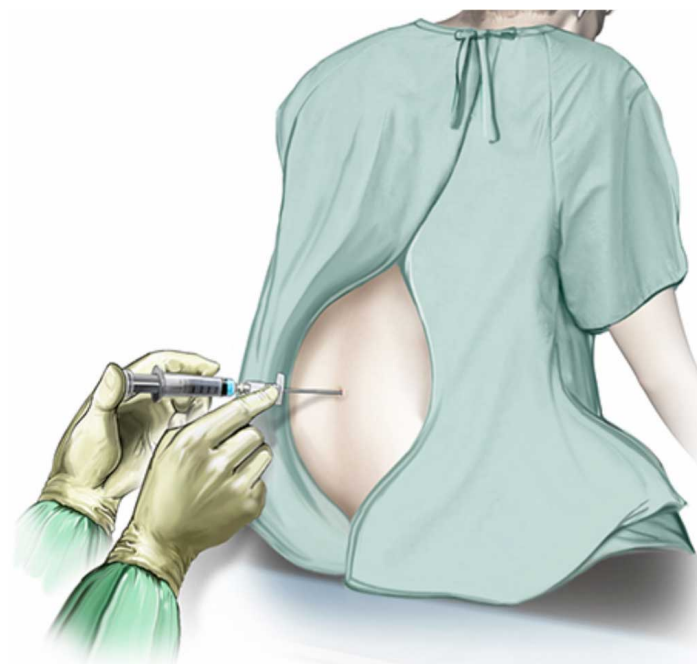
How does an epidural work?

An epidural works by temporarily numbing your nerves to give pain relief. A fine catheter (tube) is inserted in the epidural space, near your spinal cord. Most of your nerves pass through this space. Local anaesthetics and other painkillers are injected down the catheter into the epidural space to numb your nerves.

The epidural can be maintained by giving extra doses or by giving a continuous low dose (an infusion). Your anaesthetist will monitor you closely.

How is an epidural given?

To insert the epidural catheter, your anaesthetist will ask you to either sit up or lie on your side. You will need to curl up and arch your back as much as possible as this makes it easier for your anaesthetist to find the right position.



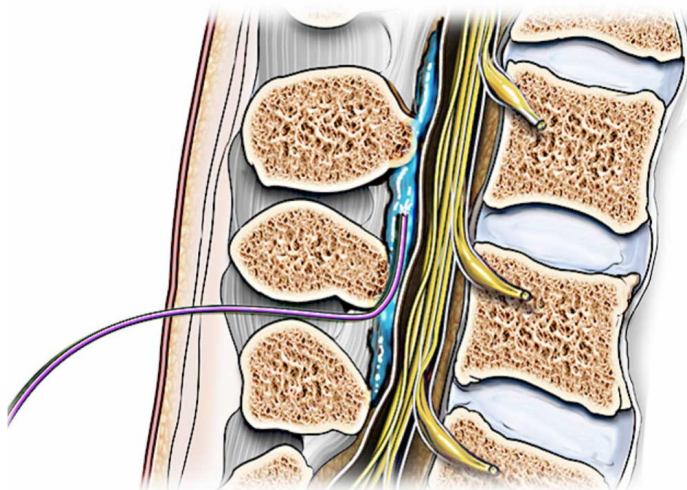
An epidural being given

Before inserting the epidural, your anaesthetist will insert a drip (small tube) in a vein in your arm. The healthcare team can give you medication through the drip to maintain your blood pressure.

Your anaesthetist will inject local anaesthetic into the area where they will insert the epidural catheter. This stings for a moment but will make the area numb, allowing your anaesthetist to put the catheter in with much less discomfort for you.

Your anaesthetist will insert the epidural catheter using a needle. They will pass the catheter through the needle. Once the catheter is in position, they will remove the needle and you will simply have the catheter in your back.

Your anaesthetist will inject a small amount of anaesthetic through the catheter to check the position. Once they have completed this check, they will give more of the anaesthetic until the epidural is working properly.



A Catheter in the epidural space

Sometimes when your anaesthetist is passing the catheter through the needle, you may get an electric shock-like feeling or a tingle in your back or in one of your legs. If this happens, let your anaesthetist know. The feeling should settle quickly. It does not mean anything is wrong.

You can help your anaesthetist by keeping still while they insert the epidural catheter. It should not be painful, although it can be uncomfortable. If you feel pain, let your anaesthetist know.

What effect does an epidural have?

The effect of the epidural can be varied by changing the type and amount of medication given. The more anaesthetic you are given, the more numb you will be. An epidural has three main effects.

- Pain relief – The epidural numbs the sensory nerves responsible for pain and touch. This gives pain relief but can also make the area feel numb or heavy. Pain nerves are easier to block than touch nerves so although you may be aware of your contractions, they should not hurt. Sensory nerves are more easily affected than movement nerves, so sometimes you can be numb but still able to move your legs. It can take up to 30 minutes for the epidural to work.

- Weakness – The nerves supplying muscles may also be affected. This can make it difficult for you to move your legs and get out of bed. It may also make it difficult for you to pass urine properly.
- Low blood pressure – The nerves that help to control blood pressure are the most easily affected. You may not be aware of this happening but your anaesthetist will be monitoring you closely for any problems with low blood pressure.

What are the benefits of an epidural?

An epidural gives the most reliable pain relief for labour. It reduces stress on you and sometimes your baby.

An epidural usually does not cause drowsiness or make you feel sick, or delay breastfeeding.

What complications can happen?

Your anaesthetist will try to make the epidural as safe as possible but complications can happen. Some of these can be serious and can even cause death (risk: 1 in 150,000). The possible complications of an epidural anaesthetic are listed below. Any numbers which relate to risk are from studies of people who have had an epidural anaesthetic. Your anaesthetist may be able to tell you if the risk of a complication is higher or lower for you.

- Longer second stage of labour and less of an urge to push. A forceps delivery is therefore more common, although you will probably still have a normal delivery. Having an epidural does not increase the risk of needing a caesarean section.
- A drop in your baby's heart rate sometimes happens shortly after the catheter is inserted. Although this usually improves, your midwife will closely monitor your baby.
- Failure of the epidural (risk: 1 in 20). About 9 in 10 epidurals work well first time. Of those that do not, about half are adjusted and then work well. If the epidural is not working well enough, your anaesthetist and your midwife will discuss the options with you. An option may be to remove the epidural and insert another one.

- Low blood pressure (risk: 1 in 25). The risk depends on your medical condition and the type of medication used. It is easily treated and you will be closely monitored by your anaesthetist and midwife.
- Shivering soon after the catheter is inserted. This usually settles but can be treated by reducing the anaesthetic given.
- Headache is common both during and after labour. There is a particular type of headache that can happen if the bag of fluid around your spinal cord leaks (risk: 1 in 100). This headache can vary from mild to severe and can be treated.
- Allergic reaction to the equipment, materials or medication. The healthcare team is trained to detect and treat any reactions that might happen. Let your anaesthetist know if you have any allergies or if you have reacted to any medication or tests in the past.
- Itching, if morphine or similar painkillers are given. The effect is usually mild, although it can sometimes be more severe. Medication can be used to treat the itching or the type of painkiller can be changed. The itching always goes away, usually after 1 to 2 days.
- Difficulty passing urine because the nerves to your bladder are numbed. You will usually have a catheter (tube) in your bladder to help you to pass urine.
- Temporary leg weakness is common and can vary from being almost unnoticeable to not being able to move your legs at all. If leg weakness is causing a problem, the epidural can sometimes be adjusted to make your legs more mobile. You may need someone to stay with you and help you for a few hours after the epidural.
- Backache is common after an epidural. It is common to have a bruised feeling for a few days where the epidural was inserted. There is no evidence that having a straightforward epidural causes long-term backache and epidurals are commonly used to treat people with long-term back pain.
- Increase in temperature (risk: 1 in 6). This is not caused by an infection and settles quickly. It may be associated with a slightly less alert baby immediately after delivery but this is temporary.

- Cardiovascular collapse (where your heart stops). This is rare.
- Short-term nerve injury, which recovers fully (risk: 1 in 7,000). 1 in 2,000 women will have sensations, such as tingling in one leg, after giving birth. This is usually caused by birth itself.
- Unexpected high block, if the local anaesthetic spreads beyond the intended area (risk: 1 in 18,000). This can make it difficult for you to breathe, cause you to have low blood pressure and, rarely, cause you to become unconscious. You may be transferred to the intensive care unit or high dependency unit so the healthcare team can monitor you more closely.
- Infection around your spine (risk: 1 in 145,000).
- Blood clot around your spine (risk: 1 in 150,000).
- Nerve injury lasting more than three months (risk: 1 in 24,000). This can be caused by infection, bleeding near your spinal cord, or injury to your spinal cord.

You should ask your anaesthetist if there is anything you do not understand.

A complication may happen after the epidural has been removed. If you have any of the following problems, you or your doctor should contact the hospital straightaway.

- Pus, redness, tenderness or pain where the epidural was inserted.
- A high temperature.
- Feeling unwell, even after recovering from the labour itself.
- Discomfort when in a bright room or sunlight (photophobia).
- Neck stiffness.
- Difficulty moving or feeling your legs.
- Difficulty passing urine.
- Bowel incontinence.

Summary

There are many different ways of controlling pain in labour, most with varying levels of success.

An epidural gives the best pain relief. However, complications can happen. You need to know about them to help you to decide the best form of pain relief for you. Knowing about them will also help to detect and treat any problems early.

Keep this information document. Use it to help you if you need to talk to the healthcare team.

Some information, such as risk and complication statistics, is taken from global studies and/or databases. Please ask your surgeon or doctor for more information about the risks that are specific to you.

This document is intended for information purposes only and should not replace advice that your relevant healthcare team would give you.

Acknowledgements

Reviewers: Iain Moppett (DM, MRCP, FRCA), Amelia Banks (MRCP, FRCA)

Illustrator: Medical Illustration Copyright © Nucleus Medical Art. All rights reserved. www.nucleusinc.com